

## How to get your **ZEITRONIX** Zt-2 to connect to the **AccessTUNER™ Professional or Race software v1.00**

**1<sup>st</sup>** – Install the device manufacturers’ software and verify that the device is working properly through your COM Ports before you try to connect it to the **AccessTUNER** Professional or Race software. If you cannot get the device to communicate with your laptop using the manufacturer’s software then you will not be able to get it to work with the **AccessTUNER** software.

**2<sup>nd</sup>** – Plug your USB-Serial converter for this device into an open USB port on your computer. If you have the same brand of USB-Serial converter for all of your devices then you will want to plug them in one at a time so you can see which COM Port is going to which device. If you have a designated serial port on your laptop, we suggest you use that port for your **AccessTUNER** cable.

**3<sup>rd</sup>** – Connect your **AccessTUNER** cable to your computer, either to your designated serial port or through a USB-Serial converter.

**4<sup>th</sup>** – Right click on your My Computer icon, choose the Properties option, then the Hardware tab, and finally the Device Manager button, see below picture.



In the Device Manager area you will want to double-click the “Ports (COM & LPT)” device link so you can see what COM Ports Windows has assigned to the ZT-2 and the **AccessTUNER** cable. Write down which device is on which COM port; you will need to know which Com Port goes to which device for step 7.

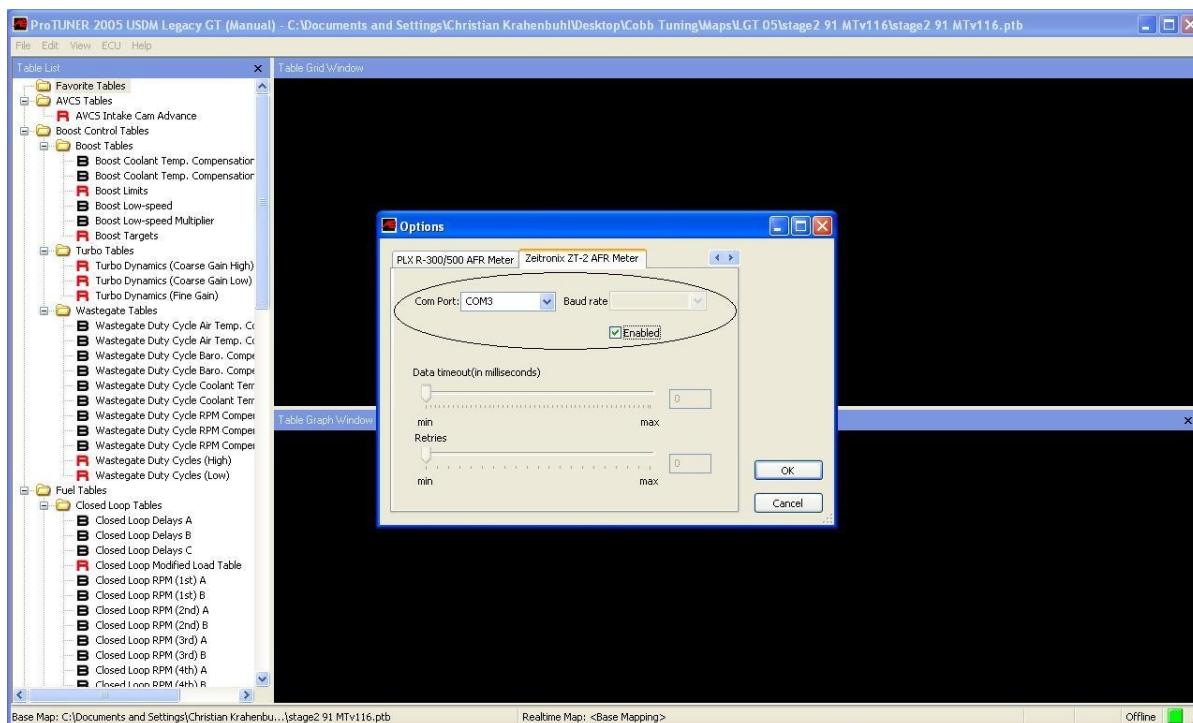
**5<sup>th</sup>** – After you have opened your **AccessTUNER** software and BEFORE you choose the Live Tuning option (CTRL+L) in your **AccessTUNER** software, press CTRL+F so that you can access your Configure Options menu.

**6<sup>th</sup>** – Go to the Communications tab and press the “Auto Detect” button; this will open a Com Port and attempt to find the ECU. The ignition must be in the full “ON” position and the **AccessTUNER** cable must be connected to the OBDII port and the USB-Serial converter on your laptop. After the ECU is found, make sure the correct Com Port is selected in the “Com Port:” drop down menu.



**7<sup>th</sup>** – Now go to the “Zeitronix ZT-2 AFR Meter” tab and choose the correct Com Port for that device (USB-Serial converter). Make sure you have “Enabled” that device as well; a check mark should be in the “Enabled” box (this enables the software to

receive the serial information). Please verify that no other external devices have been enabled as well. Press the OK button to save your settings and to close this window.



8<sup>th</sup> – For this final step you will need to choose the Live Tuning option through the software, CTRL+L. This will connect the **AccessTUNER** software to the ECU and bring in the serial information in from the ZT-2. Now press CTRL+F and go to the “Logging” tab and check the box that allows you to datalog the Lambda (or AFR) serial information from the ZT-2. If you wish to view this information on the dashboard, go to the “Gauge List” tab and choose the option to view the Lambda (AFR, or other supported device information) from the external device. Press the OK button to save your settings and to close this window. Start the vehicle, you should now be seeing the external WBO2 device providing serial information to the **AccessTUNER** software.



v1.00

Cobb Tuning, Inc. has Zeitronix's written permission to use the Zeitronix Logos in their technical documentation.

Copyright © 2008 Cobb Tuning Products, LLC All Rights Reserved.