

SUBARU



COBB[®]

ACCESSPORT

QUICK START GUIDE



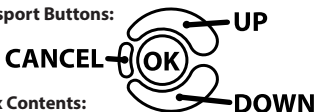
PRODUCT INTRODUCTION

Congratulations on the purchase of a new Accessport hand-held programmer. This quick start guide explains how to install the Accessport on your vehicle. Refer to the Accessport user manual located online at www.cobb tuning.com/subaru-ap. Check the website for more information about features, capabilities and additional instructions.

The Accessport can:

- Reprogram the factory engine control unit (ECU) with improved tuning parameters through the on-board diagnostic (OBD-II) port
- Monitor vehicle sensor data
- Read and clear engine diagnostic trouble codes (DTCs)
- Measure 0-60 and 1/4 mile times
- Monitor current and average fuel economy

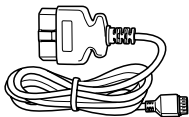
Accessport Buttons:



In-Box Contents:



Accessport



OBD-II Cable

2003-2005 WRX Initialization
Connector (WHITE)
If applicable



2002 WRX Initialization
Connector (BLUE)
If applicable



USB Cable

Please visit www.cobb tuning.com/apmanager to download Accessport Manager for your computer operating system as well as get access to the latest COBB Tuning Off-The-Shelf maps for your Accessport.

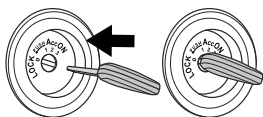
If you have issues transferring maps or updating the Accessport while using USB 3.0 ports, please try using a USB 2.0 hub adapter. For any questions, please contact our support team at 866-922-3059 or support@cobb tuning.com

ACCESSPORT INSTALLATION

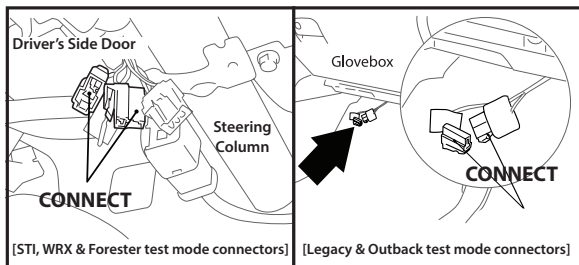
IMPORTANT! For installation purposes, it is important to ensure that the vehicle's battery has adequate power for both the Accessport and the ECU. Because of this, it is recommended that all in-car electronics and vehicle lights are turned off during the installation process to reduce drain on the vehicle's battery. For improved safety during installation, a car battery charger can be connected to the vehicle during the installation process

Getting Started:

1. You will need the Accessport and OBD-II cable to perform the installation. Insert the key into the vehicle's ignition and leave it in the OFF position.



2. For Subaru models utilizing a SUB-001 or SUB-002 (not required on SUB-003) Accessport, locate the green Test Mode connectors under the driver's side dash to the left of the steering column (see diagram). With the connectors located, enable Test Mode by plugging the two connectors into each other. To ensure Test Mode was successfully enabled, turn the key to the ON position but do not start the engine. You may hear the radiator fans cycling on/off as well as the fuel pump cycling and the 'Check Engine' light should blink. THIS IS A NORMAL FUNCTION OF TEST MODE. Once Test Mode is verified, turn the key back to the OFF position and continue.



NOTE: The Test Mode connectors must be connected whenever changing a base map.

3. On 2002-2005 WRX models identify the correct Initialization Connector for your vehicle (2002 WRX = BLUE, 2003-2005 WRX = WHITE). Attach the Initialization Connector to the corresponding connector under the driver's side dash. This connector will be located near the green Test Mode connectors and will be translucent white in color. Do not proceed until this step is complete.

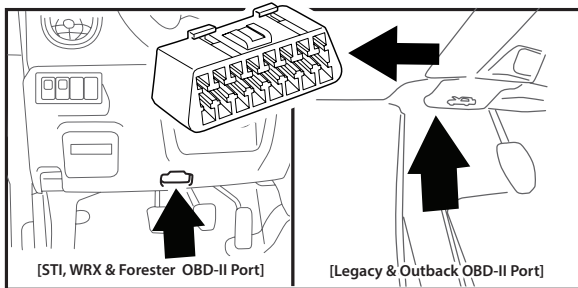


2002 WRX Initialization Connector (BLUE)

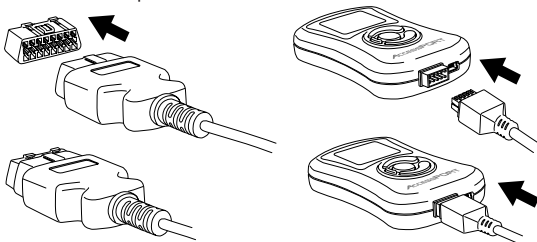


2003-2005 WRX Initialization Connector (WHITE)

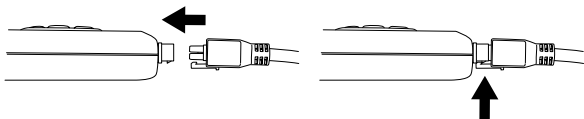
4. Locate the vehicle's female OBD-II port under the driver's side dash.



5. Plug the OBD-II cable into the OBD-II port under the dash of vehicle. Then connect the small end of the OBD-II cable to the 10 pin port on the bottom of the Accessport.

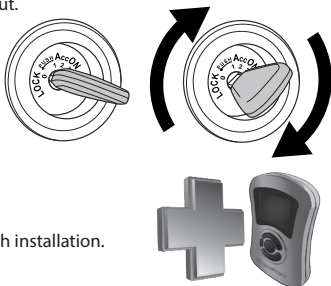


6. Make sure the clasp on the OBD-II cable firmly engages the tab on the 10 pin port. NOTE: Your Accessport may only have 9 pins. This is by design.



7. Turn the key to the ON position, turn off AC/heater fans and headlights, and make sure all doors are shut.

NOTE: The engine should not be running.



7. Select **Install** to proceed with installation.

WARNING!

Do not disturb the Accessport or OBD-II cable while installation is taking place. Failure to do so may result in incomplete ECU reprogramming which will render the vehicle inoperable.

Vehicle Identification:

The Accessport will attempt to automatically determine the target vehicle for installation.

If the Accessport successfully identifies the vehicle:

Verify that the identified vehicle is correct and press OK to confirm.

If an error occurs:

Please reference the Troubleshooting section of the Accessport User Manual for additional information. The Accessport User Manual can be found online at www.cobbtuning.com/subaru-ap

Map Selection:

After the Accessport identifies the vehicle, it will present a list of maps for that vehicle. The map selected will become the base map for the vehicle. To ensure the best performance, select the map that most closely matches the modification level of the vehicle. Select a map and press OK to view detailed information about that map. After confirming that the selected map is correct, press OK again to proceed, or press CANCEL to return to the map selection list.

Save Stock ECU Program Data:

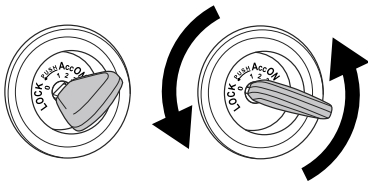
After confirming the installation map, the Accessport will download the current stock ECU program data from the vehicle. The Accessport saves this data for use during the Uninstall process to ensure that the vehicle is completely returned to stock. The download process will take a few minutes to complete.

Install Accessport Programming:

With the stock ECU data saved, the Accessport will proceed with installation to the vehicle. At this point the Accessport reprograms the vehicle's ECU with new program data and calibration parameters from the selected map file. This process will take several minutes to complete.

Installation Complete:

The last installation process the Accessport goes through is clearing trouble codes. When this step is complete turn off the ignition and wait for approximately 10 seconds. After that is done your screen should now display "Installation Complete". You may now unplug the Accessport from the vehicle. The Accessport does not need to be plugged in to the vehicle again until a map change is necessary, however, it can remain plugged in to use the Performance testing, Live Data monitoring and Data Logging features. Please note that the Accessport is designed to work with only one vehicle at a time. Once the Accessport is installed, it cannot be used with another vehicle until it is uninstalled from the original vehicle.



MAP & FIRMWARE MANAGEMENT

What Is A Map?

The Accessport reprograms the tuning parameters inside the factory engine control unit (ECU) using map files, which contain specially written instructions for the Accessport to follow during the reprogramming process. A given map file contains programming information to properly calibrate the ECU for a specific set of modifications to a vehicle. In addition to calibrating for specific modifications, maps are also programmed for different uses, such as improved performance, higher fuel efficiency, alternate fuel grades, anti-abuse (valet) and anti theft. Through the use of the Accessport and different map files, the ECU can be reprogrammed to accommodate the user's immediate need.

Downloading and Installing the Accessport Manager Software:

The Accessport Manager Software can be found at www.cobb tuning.com/apmanager. Please follow all on-screen instructions during the installation process.

Acquiring And Loading New Accessport Maps:

The Accessport ships with a number of pre-installed maps that are up-to-date at the time of shipping. However, it is possible that newer revisions of maps have been made available, or that the Accessport did not come pre-installed with a map that is appropriate for the target vehicle. To load a new or updated map to the Accessport, simply download and the map file to an easy to remember location (My Documents, Desktop, etc.). Then, drag and drop the map file in to AP Manager to transfer it to your Accessport. Continue this process for all desired maps.

How do I update the software on my Accessport?

Designed with user friendliness in mind, Accessport Manager will automatically communicate with COBB's servers to find and download the latest Accessport application and firmware packages. Simply plug in the Accessport, using the provided USB cable, and launch Accessport Manager. All firmware details are handled for you. Just sit back and wait for completion.

COBB[®]

Phone: 866.922.3059 | Fax: 512.997.6400

2311 W. Rundberg Ln. Suite 500 Austin, TX 78758

www.cobbtuning.com | facebook.com/cobbtuning

© 2013 COBB Tuning Products, LLC. All rights reserved. Accessport, Accesstuner, COBB Tuning and the COBB logo are trademarks of COBB Tuning Products, LLC. All other company and product names mentioned are trademarks of their respective companies. Mention of third-party brands or products does not constitute an endorsement or recommendation of COBB Tuning from said companies.