

COBB[®]

User Guide

For

Ford Accessport

12/13/2013

Table of Contents

Product Introduction 4

 Supported Vehicle List 4

 In-Box Contents 4

What Is A Map? 5

Accessport Installation..... 6

 Pre-Installation..... 6

 Getting Started 6

 Vehicle Identification 9

 Map Selection 9

 Save Stock ECU Program Data **Error! Bookmark not defined.**

 Install Accessport Programming 10

 Installation Complete..... 10

 Dealer Service/Visit 10

Accessport Features & Functionality 11



..... 11

Monitor 11

 Live Data. 11

 Data Log 11

 Set Rev Warning..... 12

 Set Live Data List 12

 Set Data Log List..... 12

Reset Live List.....13

Reset Log List13

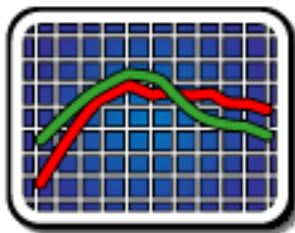


.....13

Performance13

0-60 MPH.....13

¼ Mile13



.....14

Tune14

Change Map.....14

Show Current Map.....14

.....15

Troubleshooting.....15

Reset ECU.....15

Read Codes15

Reset KAM.....15



.....16

Uninstall.....16

Uninstall.....16



.....16

Accessport.....16

 About.....16

 Settings.....16

 Reset Settings.....16

Accessport Troubleshooting.....17

Support Contact Information.....18

Environmental Information.....18

 Operating and Storage Temperatures.....18

 Do Not Get Wet.....18

 Handling and Storage.....18

 Do Not Attempt Repairs Yourself.....19

Product Introduction

Congratulations on the purchase of the new Accessport handheld programmer. The Accessport can:

- Reprogram the factory engine control unit (ECU) with improved tuning parameters through the on-board diagnostic (OBD-II) port
- Monitor vehicle sensor data
- Read and clear engine diagnostic trouble codes (DTCs)

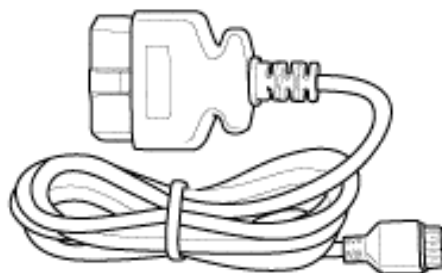
Supported Vehicle List

- 2013-2014: ADM Focus ST
- 2013-2014: EDM Focus ST
- 2013-2014: USDM Focus ST
- 2014: USDM Fiesta ST

In-Box Contents



AccessPORT



OBD-II Cable



USB Cable

Accessport Version 2b

WARNING!

Installation and use of the Accessport may void all or a portion of the vehicle manufacturer's standard warranty. There is no guarantee expressed or implied by COBB Tuning or any of its affiliates for the use of the Accessport. The user accepts all risks and responsibilities when using the Accessport.

WARNING!

Use of the Accessport while operating a moving vehicle is strictly prohibited by law. COBB Tuning and its affiliates accept no responsibility for damages or injury caused by misuse of the Accessport.

WARNING!

The Accessport may not be able to function if the vehicle's wiring has been modified. If problems occur while using the Accessport, please verify that all wiring to and from the ECU is correct and functional.

What Is A Map?

The Accessport reprograms the tuning parameters inside the factory engine control unit (ECU) using map files, which contain specially written instructions for the Accessport to follow during the reprogramming process. A map file can contain information for any number of different modifications or enhancements to a vehicle, ranging from a race map for a heavily modified vehicle to an economy map for a stock vehicle. Through the use of the Accessport and different map files the ECU can be reprogrammed to accommodate virtually any vehicle configuration.

Accessport Installation

Pre-Installation

The Accessport comes with the most up-to-date software available at the time of shipment. However, it is possible that updated software and/or map files have been made available since the time of shipment. Therefore, the recommended procedure is to connect the Accessport to the AP Manager software and download the latest software and map files for the target vehicle.

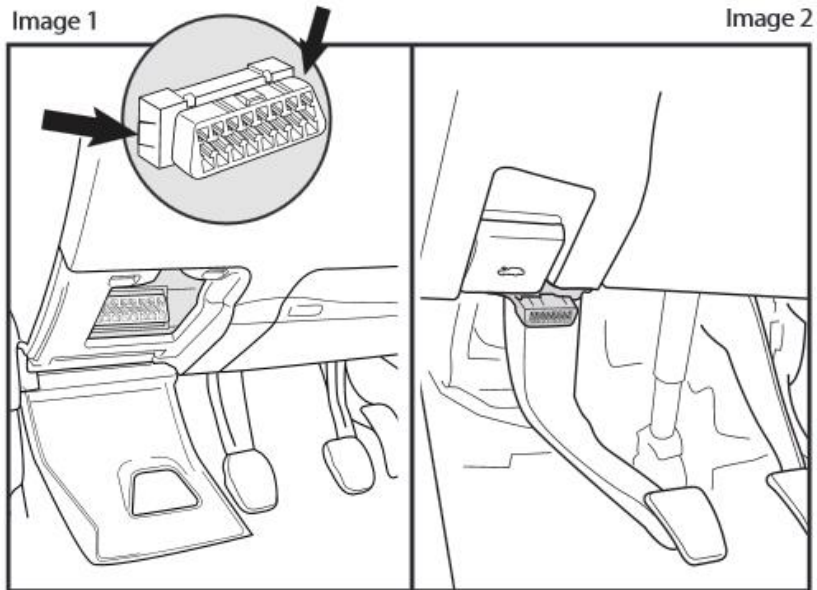
IMPORTANT!

Before installing the Accessport on the vehicle, it is important to verify that the vehicle is adequately prepared for the installation process. Since the Accessport uses the vehicle's battery for power and the ECU reprogramming process requires adequate battery power as well, it is critical to verify that the vehicle's battery has a good charge. This can be done through the use of a battery charger/conditioner or by driving the vehicle for a period of time prior to installation to allow the alternator to recharge the battery. Furthermore, please ensure that all in-car electronic devices are turned off to reduce power draw on the battery. This includes car stereos, video screens, GPS units, radar detectors, interior and exterior vehicle lights, and any other electronic device that uses the car battery for power.

Getting Started

Note: The installation process includes the optional full time cable installation. You do not have to release the OBD-II connector port from the harness for Accessport installation.

1. Make sure the key fob is present inside the cabin.
2. Locate the vehicle's OBD-II port. Location of the OBD-II port may vary depending on the vehicle model. The Focus ST has a covered OBD-II port shown below in "Image1". The Fiesta ST is located just under the plastic trim behind the hood latch release (see Image2).

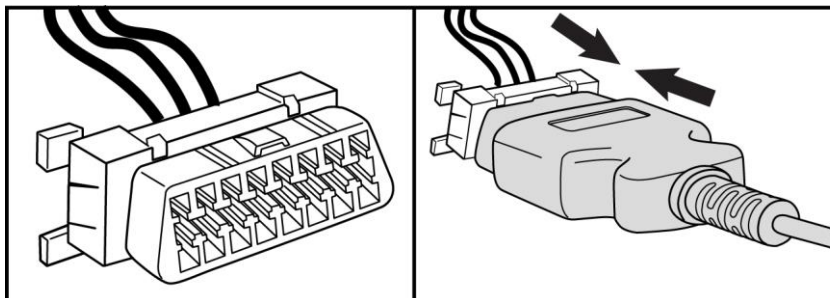


The following steps 2.1 – 2.4 are optional install steps for the Ford Focus ST model only. Optional steps are intended for dash mounted Accessports and ultimately present a cleaner cable routing solution.

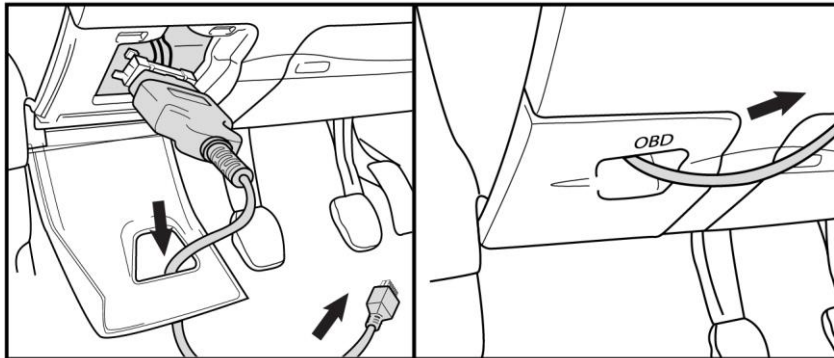
2.1 Optional install: Locate the clips on the sides of the OBD-II port.

2.2 Optional install: Remove the OBD-II connector port from the harness by pressing the clips in and releasing the OBD-II port from the harness.

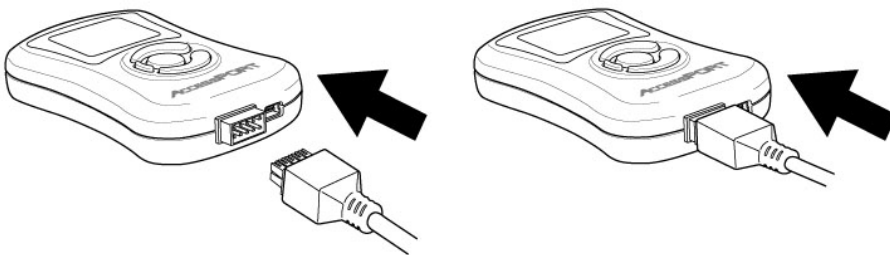
2.3 Optional install: Plug the OBD-II cable into the OBD-II port under the dash of the vehicle.



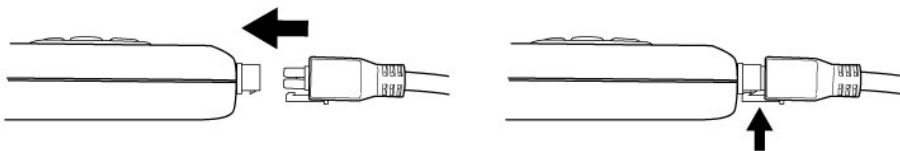
2.4 Tuck the OBD-II connector port back into the dash so that the panel will close.8



3 Connect the small end of the OBD-II cable to the 10 pin port on the bottom of the Accessport.

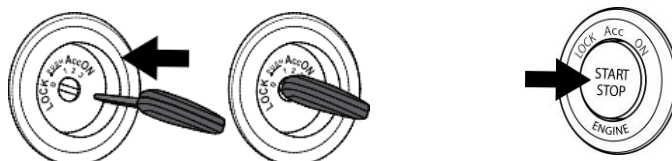


4 Make sure the clasp on the OBD-II cable firmly engages the tab on the 10-pin port.

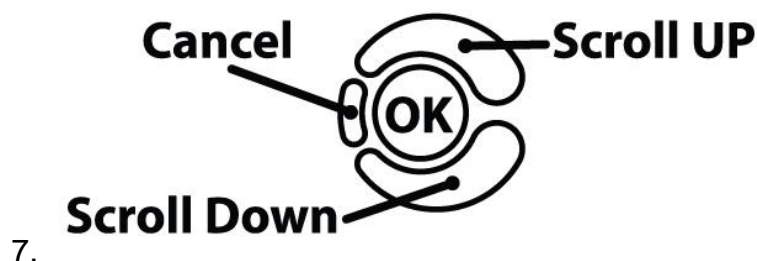


5 Next, press the ENGINE START/STOP button once to turn on the ignition.

NOTE: The engine should not be running.



- 6 Select **[Install]** from the Accessport menu by pressing the **[OK]** button to proceed with installation. Below is a diagram of the Access Port's keypad function.



Vehicle Identification

The Accessport will attempt to automatically determine the target vehicle for installation.

If the Accessport successfully identifies the vehicle:

Verify that the identified vehicle is correct and press **[OK]** to confirm.

If an error occurs:

Please refer to [\[TROUBLESHOOTING SECTION\]](#).

Map Selection

Once the Accessport determines the installation vehicle type, it will present a list of maps from which to choose for installation. The Accessport reprograms the ECU with the calibration data from the map file selected for installation. It is important to select the map file that most closely matches the modification level of the target vehicle.

If you are unsure about which map applies to your modification level, please see the map notes and their requirements for the modifications that will best fit your vehicle.

Select a map and press **[OK]** to view detailed information about that map. After confirming that the selected map is correct, press **[OK]** again to proceed, or press **[CANCEL]** to return to the map selection list.

WARNING!

If a previous installation of an Accessport is detected, you will be given the option to overwrite it with a new installation. Be aware that the previous installation will be permanently lost and unrecoverable. This detection may occur prior to saving the stock ECU program data, in which case the ECU program data will not be saved. In the case of a previous install, a stock ECU program supplied on the Accessport will be used when you uninstall.

Install Accessport Programming

After the Accessport downloads and saves the stock ECU program data, it will proceed with installation to the vehicle. It is at this point that the Accessport reprograms the vehicle's ECU with the new program data and calibration parameters from the selected map file. This process will take about 5 minutes to complete.

WARNING!

Do not disturb the Accessport and the OBD-II cable while installation is taking place. Failure to do so may result in incomplete ECU reprogramming which will render the vehicle inoperable.

Installation Complete

The Accessport is now fully installed and ready for use. Turn the key to the OFF position and unplug the OBD-II cable from the vehicle.

The vehicle's ECU is now programmed with new calibration data. The Accessport does not need to be plugged into the vehicle for the calibration to be in effect, however, there are other features of the device that may be used at any time.

Please note that the Accessport is designed to work with only one vehicle at a time. **Once the Accessport is installed, it cannot be used with another vehicle until it is uninstalled from the original vehicle.**

Dealer Service/Visit

Prior to any visit to your dealer for service, COBB Tuning recommends uninstallation of the Accessport from your vehicle. This will help minimize warranty complications with your modified vehicle.

Note: Occasionally, dealers will update the ROM revision on your vehicle's ECU. If this happens, there is a chance that the new ROM revision is unrecognized by the Accessport, evidenced by the fact that the Accessport will no longer successfully identify the vehicle during installation. If this happens, please follow ROM-dump instructions [here](#). Please note that it may take up to 5 work days for the new ROM revision to be supported.

WARNING!

Installing an Accessport may void powertrain and associated warranties. COBB Tuning makes no claim of liability for loss of warranty stemming from the use of the COBB Tuning Accessport or associated parts. Installation of the COBB Tuning Accessport releases COBB Tuning from all liability from voided or loss of warranty by your dealer or the manufacturer.

Accessport Features & Functionality



Monitor

Live Data.

The Accessport can read sensor data from the factory ECU and display it as an on-screen gauge. This feature allows the Accessport to function as an auxiliary gauge displaying boost, RPM, temperature, or any number of other parameters.

To change which monitor is currently being displayed in Live Data, select the monitor using the up/down buttons and press the OK button to activate the monitor.

Use 'Set Live Data List' in the 'Monitor' sub-menu to set which monitors are available for selecting in Live Data.

NOTE: The Accessport is only capable of displaying live data while the ignition is turned to the "ON" position. The Accessport will display an error message if it cannot communicate with the vehicle.

Data Log

The Accessport can record sensor data from the factory ECU while you drive. With the ability to store multiple sessions, the Accessport can function as a complete engine datalogger and diagnostic tool. To begin datalogging, press the OK button while in Live Data mode. An on screen prompt will notify you

when the Accessport is recording data. To view the results of your datalog sessions, simply connect the Accessport to your PC and retrieve the results using the AP Manager software. Data Log recordings are stored in a .csv (Comma Separated Values) format and are easily viewed using any spreadsheet application. Click [here](#) for step-by-step instruction.

Use 'Set Data Log List' in the 'Monitor' sub-menu to set which monitors are logged.

NOTE: The Accessport is only capable of datalogging while the ignition is turned to the “ON” position. The Accessport will display an error message if it cannot communicate with the vehicle.

NOTE: Up to 10 log files can be stored on the Accessport. Use AP Manager to delete unneeded logs. If datalogging is started when there are already 10 log files on the Accessport, the log file with the lowest numerical value will be automatically overwritten.

NOTE: The 10 log files can be a combined length of 2+ hours long.

Set Rev Warning

Use this function to set the desired RPM value for Shift Light. The Shift Light function is available while viewing Live Data. While the actual engine RPM exceeds the desired RPM limit, the Accessport screen will flash, indicating an over-rev condition.

Set Live Data List

This list allows the user to enable and disable items for viewing in Live Data. Only monitors with a checkbox will be in the list of available monitors to view while in Live Data. Highlight a monitor and press the OK button to activate/deactivate it for logging.

Use 'Live Data' in the 'Monitor' sub-menu to view monitor data.

Set Data Log List

This list allows the user to enable and disable items for logging. Only monitors with a checkbox will be recorded while using the Data Log feature. Highlight a monitor and press the OK button to activate/deactivate it for logging.

Use 'Data Log' in the 'Monitor' sub-menu to start and stop logging.

NOTE: Datalogging performance is reduced as the number of items selected to datalog increases.

Reset Live List

Reset to default monitor list for viewing in Live Data. This item is grayed out and not selectable if the default monitor list is already selected.

Reset Log List

Reset to default monitor list for logging in Data Log. This item is grayed out and not selectable if the default monitor list is already selected.



Performance

The Accessport can calculate several performance measurements.

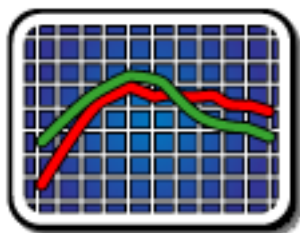
NOTE: The Accessport is only capable of calculating performance test results while the ignition is turned to the “ON” position. The Accessport will display an error message if it cannot communicate with the vehicle.

0-60 MPH

To record the 0-60 MPH performance, select this menu option and follow instructions. A time slip showing the performance results will be displayed at the end of the performance test.

¼ Mile

To record the ¼ Mile performance, select this menu option and follow instructions. A time slip showing the performance results will be displayed at the end of the performance test.



Tune

Enhance the performance of your car.

Change Map

To change the mapping on your ECU, select this menu option and follow the instructions. The ignition must be turned to the “ON” position during the Change Map operation. You will be prompted to select a pre-loaded map. The same warnings that apply to the installation process apply here as well (battery charge level, turn accessories off, etc.). The Change Map process takes about 1 minute.

Show Current Map

To see what the last map that was flashed to your car, select this menu option. You can press the OK button to see a detailed description of the map.



Troubleshooting

Use the Accessport as a diagnostic tool.

NOTE: The Accessport is only capable of displaying trouble codes while the ignition is turned to the “ON” position. The Accessport will display an error message if it cannot communicate with the vehicle.

Reset ECU

Use this function to reset all diagnostic trouble codes (DTC) and clear all active and pending codes.

Read Codes

Use this function to read trouble codes from the engine computer. Stored codes indicate a mechanical or electrical fault. Use the up/down buttons to highlight a code and display a short description of the trouble code (if available).

Reset KAM

Reset keep alive memory (KAM). More specifically this resets LTFT (Long Term Fuel Trim) and ETC (Electronic Throttle Control) learning. This feature is handy as it allows you to reset adaptive learning when making certain hardware changes, repairs, or fuel changes.



Uninstall

Uninstall

Selecting this item will remove the Accessport programming from the vehicle on which it is installed and return the ECU back to a stock state.



Accessport

About

Displays information about the Accessport firmware version, serial number, status (installed or uninstalled) and vendor.

Settings

Change Accessport settings.

Language: Choose from an array of various languages. *

Units: Choose from Standard, Metric, and Metric with AFR.

* Not all menu entries are translated.

Reset Settings

Reset Accessport user settings.

- Resets Language settings to default
- Resets Data Log settings to default
- Resets Unit settings to default
- Resets Shift Light settings to default

Accessport Troubleshooting

Symptom	Troubleshooting Steps
Accessport will not communicate with vehicle.	<ol style="list-style-type: none"> 1. Check USB cable connection on both the Accessport and the OBD-II cable. 2. Ensure that the OBD-II cable is making good contact inside the vehicle's OBD-II port. 3. Verify that the vehicle's ignition is turned to the "ON" position.
Accessport cannot reflash ECU.	<ol style="list-style-type: none"> 1. Follow all steps for "Accessport will not communicate with vehicle." 2. Verify that all steps required for ECU reprogramming mode were properly followed.
Accessport cannot identify vehicle during installation.	<ol style="list-style-type: none"> 1. Ensure that the Accessport is running the most recent version of firmware. For more information, see COBB Forums. 2. Some vehicles are not initially supported and will require users to send in the ROM file. Please follow ROM-download instructions here. 3. For more information or assistance, please contact tech support.

Support Contact Information

Web	http://www.cobbtuning.com/ http://www.cobbforums.com/
E-Mail	support@cobbtuning.com
Phone	866.922.3059

Environmental Information

Operating and Storage Temperatures

The Accessport is designed to be operated at temperatures between 32° and 95° F (0° and 35° C) and with a relative humidity below 90%. Using the Accessport outside of these recommendations may result in damage.

When storing the Accessport, do so in a place where temperature is always between 0° and 115° F (-20° and 45° C) and with a relative humidity below 90%.

Never store your Accessport in an area that receives direct sunlight.

Do Not Get Wet

Take care to prevent any liquids from coming in contact with the Accessport or any associated equipment.

In the event your Accessport, or associated equipment, gets wet you may need to send it in for service. Please contact technical support BEFORE attempting to use the Accessport.

Handling and Storage

Your Accessport may be damaged by improper storage or handling. Be careful not to drop your Accessport or any associated parts.

Never store your Accessport in an area that experiences any noticeable levels of vibration, static electricity, heat shock, or excessive swings in relative humidity.

Do Not Attempt Repairs Yourself

Never attempt to open your Accessport or any associated equipment. Doing so puts the components at risk of damage from, but not limited to, static shock. No user-serviceable parts are inside. At no time will ANY authorized representative of Cobb Tuning Products, LLC. ask you to open or mechanically/electronically alter the Accessport.

Opening the Accessport will void any and all warranties for the device and its operation.