

How to get your PLX Devices Inc. iMFD WBO2 to connect to the **AccessTUNER™ Professional or Race software v1.00**

1st – Install the device manufacturers’ software and verify that the device is working properly through your COM Ports before you try to connect it to the **AccessTUNER** software. If you cannot get the device to communicate with your laptop using the manufacturer’s software then you will not be able to get it to work with the **AccessTUNER** software.

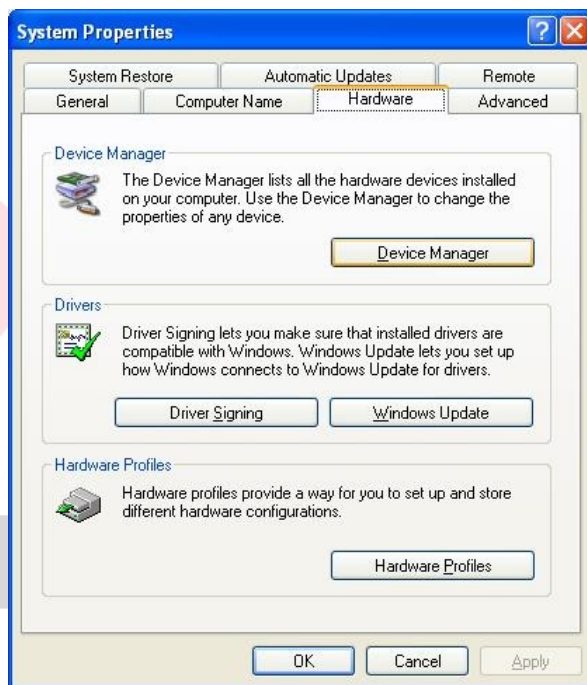
2nd – Make sure you have downloaded the “MFD_Packet.dll” file from this PLX Devices Inc. iMFD WBO2, and DM-100/DM-200: web link = <http://www.cobbforums.com/forums/attachment.php?attachmentid=1179&d=1217968145>

3rd – Place this file in your C://Program Files/AccessECU/StreetTUNER */Plugins folder.
For Professional **AccessTUNER**, place this file in your C:\Program Files\AccessECU\AccessTUNER-Pro\Subaru\Plugins folder.

4th – Plug your iMFD WBO2 connector for this device into an open USB port on your computer.

5th – Connect your **AccessTUNER** cable to your computer, either to your designated serial port or through a USB-Serial converter.

6th – Right click on your My Computer icon, choose the Properties option, then the Hardware tab, and finally the Device Manager button, see below picture.

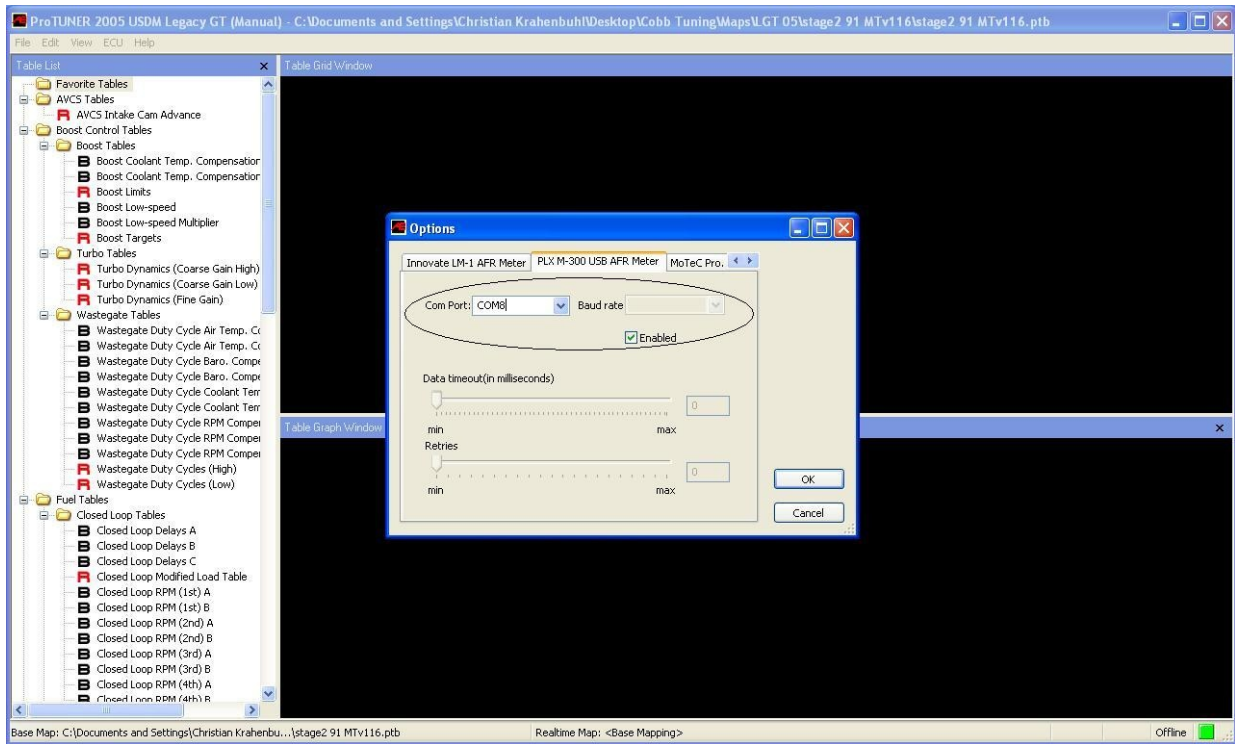


In the Device Manager area you will want to double-click the “Ports (COM & LPT)” device link so you can see what COM Ports Windows has assigned to the iMFD WBO2 and the **AccessTUNER** cable. Write down which device is on which COM port; you will need to know which Com Port goes to which device for step 9.

7th – After you have opened your **AccessTUNER** software and BEFORE you choose the Live Tuning option (CTRL+L) in your **AccessTUNER** software, press CTRL+F so that you can access your Configure Options menu.

8th – Go to the Communications tab and press the “Auto Detect” button; this will open a Com Port and attempt to find the ECU. The ignition must be in the full “ON” position and the **AccessTUNER** cable must be connected to the OBDII port and the USB-Serial converter on your laptop. After the ECU is found, make sure the correct Com Port is selected in the “Com Port:” drop down menu.

9th – Now go to the “PLX iMFD WBO2 AFR Meter” tab and choose the correct Com Port for that device. Make sure you have “Enabled” that device as well; a check mark should be in the “Enabled” box (this enables the software to receive the serial information). Please verify that no other external devices have been enabled as well. Press the OK button to save your settings and to close this window.



10th – For this final step you will need to choose the Live Tuning option through the software, CTRL+L. This will connect the **AccessTUNER** software to the ECU and bring in the serial information in from the iMFD WBO2. Now press CTRL+F and go to the “Logging” tab and check the box that allows you to datalog the Lambda (or AFR) serial information from the iMFD WBO2. If you wish to view this information on the dashboard, go to the “Gauge List” tab and choose the option to view the Lambda (AFR, or other supported device information) from the external device. Press the OK button to save your settings and to close this window. Start the vehicle; you should now be seeing the external WBO2 device providing serial information to the **AccessTUNER** software.



v1.00

Cobb Tuning, Inc. has PLX Devices' written permission to use the PLX Devices Logos in their technical documentation.