

## How to get your PLX Devices, Inc. R-300 or R-500 USB to connect to the **AccessTUNER™ Professional or Race software v1.00**

1<sup>st</sup> – Install the device manufacturers’ software and verify that the device is working properly through your COM Ports before you try to connect it to the **AccessTUNER** Professional or Race software. If you cannot get the device to communicate with your laptop using the manufacturer’s software then you will not be able to get it to work with the **AccessTUNER** software.

2<sup>nd</sup> –Please read the following text so that you can properly set up the R-300 and R-500 to work with the **AccessTUNER** software:

**The RSeries\_Packet.dll interface supports both the PLX Devices R-300 and R-500.**

**The interface provides output of Speed1 (Freq-Hz), Speed2 (Freq-Hz), Analog1 (0-5v), Analog2 (0-5v), Analog3 (0-5v), Analog4 (0-5v), Lambda (0.68-, AFR, EGT-C, EGT-F, and Knock. Lambda and AFR are both mapped to Analog4, EGT-C and EGT-F are both mapped to Analog3, and Knock is mapped to Analog2. The mapped readings must be mapped on the device before they will function properly through the interface.**

**At present, the AFR is hard-coded to gasoline, but it can be later expanded to diesel, methanol, ethanol, LPG, and CNG upon request (Please contact PLX Devices for these requests).**

3<sup>rd</sup> – Plug your R-300 or R-500 into an open USB port on your computer.

4<sup>th</sup> – Connect your **AccessTUNER** cable to your computer, either to your designated serial port or through a USB-Serial converter.

5<sup>th</sup> – Right click on your My Computer icon, choose the Properties option, then the Hardware tab, and finally the Device Manager button, see below picture.



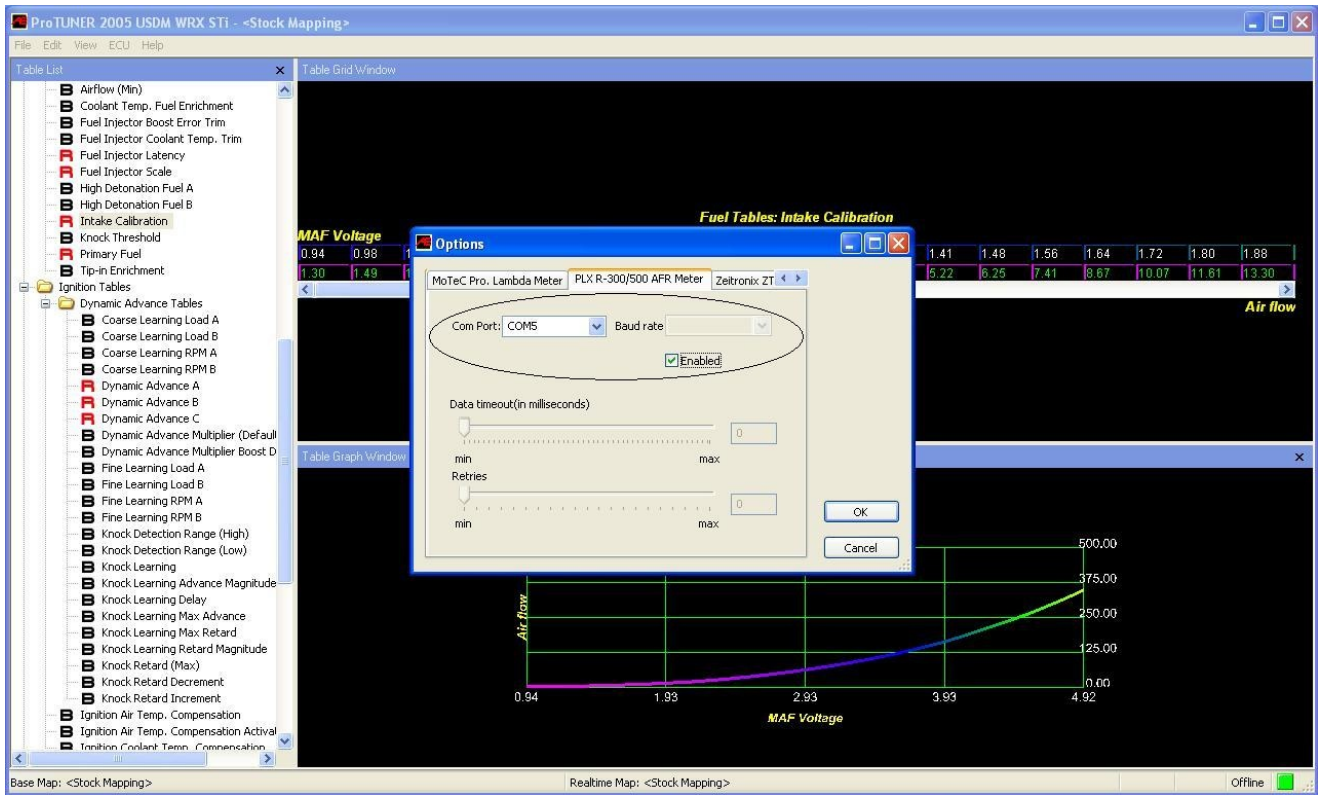
In the Device Manager area you will want to double-click the “Ports (COM & LPT)” device link so you can see what COM Ports Windows has assigned to the R-300/500USB and the **AccessTUNER** cable. Write down which device is on which COM port; you will need to know which Com Port goes to which device for step 8.

6<sup>th</sup> – After you have opened your **AccessTUNER** software and BEFORE you choose the Live Tuning option (CTRL+L) in your **AccessTUNER** software, press CTRL+F so that you can access your Configure Options menu.

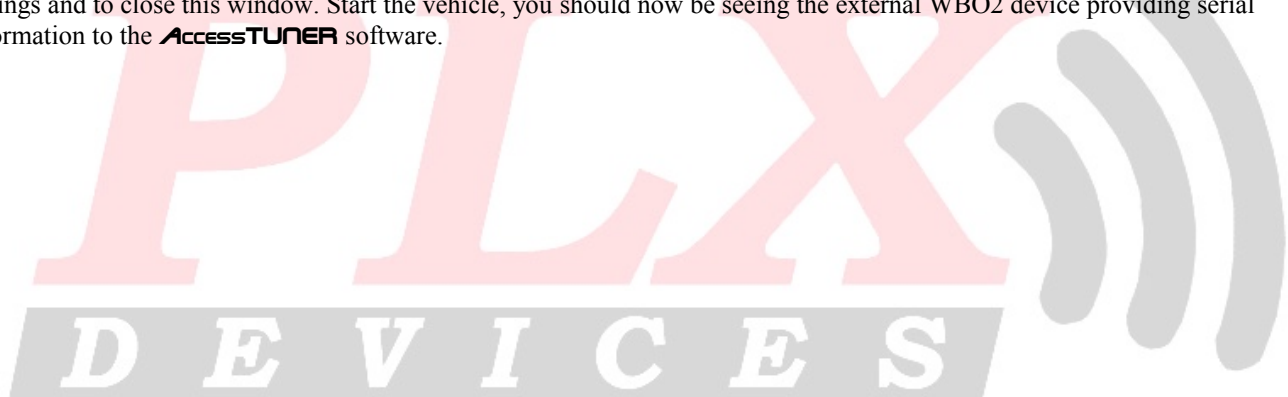
7<sup>th</sup> – Go to the Communications tab and press the “Auto Detect” button; this will open a Com Port and attempt to find the ECU. The ignition must be in the full “ON” position and the **AccessTUNER** cable must be connected to the OBDII port and

the USB-Serial converter on your laptop. After the ECU is found, make sure the correct Com Port is selected in the “Com Port:” drop down menu.

8<sup>th</sup> – Now go to the “PLX R-300/500 AFR Meter” tab and choose the correct Com Port for that device. Make sure you have “Enabled” that device as well; a check mark should be in the “Enabled” box (this enables the software to receive the serial information). Please verify that no other external devices have been enabled as well. Press the OK button to save your settings and to close this window.



9<sup>th</sup> – For this final step you will need to choose the Live Tuning option through the software, CTRL+L. This will connect the **AccessTUNER** software to the ECU and bring in the serial information in from the R-300/500USB. Now press CTRL+F and go to the “Logging” tab and check the box that allows you to datalog the Lambda (or AFR) serial information from the R-300/500USB. If you wish to view this information on the dashboard, go to the “Gauge List” tab and choose the option to view the Lambda (AFR, or other supported device information) from the external device. Press the OK button to save your settings and to close this window. Start the vehicle, you should now be seeing the external WBO2 device providing serial information to the **AccessTUNER** software.



ProTUNER 2005 USDM Legacy GT (Manual) - C:\Documents and Settings\Christian Krahenbuhl\Desktop\Cobb TuningMaps\LT 05\stage2 91 MTv116\stage2 91 MTv116.ptb

File Edit View ECU Help

Table List

Table Grid Window

Boost Tables: Boost Targets

	Throttle Position							
	0	10	20	25	30	35	45	80
800	0.00	0.00	0.00	0.00	0.10	0.10	0.19	0.97
2000	0.77	0.77	0.97	1.93	1.84	1.93	2.32	10.05
2400	0.77	0.77	3.48	6.19	8.22	8.51	10.44	16.24
2800	0.77	0.77	4.06	8.89	11.31	12.08	13.24	16.24
3600	0.77	0.77	2.32	8.12	10.73	12.08	13.53	16.24
4000	0.77	0.77	0.77	5.80	8.89	10.73	13.24	16.24
4800	0.77	0.77	0.77	3.29	6.96	8.19	12.27	15.95
5200	0.77	0.77	0.77	2.32	5.80	8.12	10.83	15.06
5600	0.77	0.77	0.77	1.35	4.64	7.15	10.34	14.11
6000	0.77	0.77	0.77	0.77	3.87	6.57	9.47	13.34
6400	0.77	0.77	0.77	0.77	3.67	6.19	8.89	13.24
6800	0.77	0.77	0.77	0.77	3.29	5.80	7.35	12.95

RPM

Rel. Pressure

Dashboard

Coolant Temp. 181	Intake Air Temp. 108	A/F Ratio 14.47	A/F Trim Immed. -5.88	A/F Trim Learned -1.18	MAF Voltage 1.92	Throttle Position 12
Vehicle Speed 19	Calculated Load 0.44	RPM 2032	Dyn. Adv. Mult. 1.00	Dynamic Advance 0.00	Knock Activity	LM1A/F Ratio 14.51

Base Map: C:\Documents and Settings\Christian Krahenbu...stage2 91 MTv116.ptb

Realtime Map: <Base Mapping>

Online

v1.00

Cobb Tuning, Inc. has PLX Devices' written permission to use the PLX Devices Logos in their technical documentation.

